



Coach/Safety Boat – Policy

Members must [Book Coach/Safety Boats](mailto:mal@fortlangleycanoecub.ca) through mal@fortlangleycanoecub.ca

COACH/SAFETY BOAT RULES AND PROCEDURES:

This info is sent out annually, as a reminder of rules and procedures for all of us who share the coach/safety boats. Please read thoroughly.

1. The following items must accompany you when operating the coach/safety boat:
 - Valid Pleasure Craft Operator Card (PCOC)
 - Paddle (use Mohawk paddle - the one with aluminum shaft)
 - Noise making device - Pealess whistle attached to PFD recommended
 - Bailer
 - PFD
 - Throw bag
 - Orange Fox 40 Boat Essentials Kit (includes 3 reflective blankets, flashlight, pencil, whistle & 50' nylon braided rope & float, Emergency Pull-out Map & AED locations). One kit is attached to each boat.
 - Cell phone
 - Each boat is equipped with a first aid kit in red waterproof bag.
 - Emergency Pull-out map and AED Locations – located in Orange Fox Essential Kit
 - Safety Lights – the safety/coach boats are fitted with a red and green bow light and a 360-degree white light which is in a plastic tube in each boat.
 - White light is to be used if on the water after sunset or before sunrise. Special permission is required by BOD to use boat in low light conditions.
2. Gas tanks are topped up weekly by designated club volunteers and coordinated by the club Member at Large (MAL). The purpose of a “designate” is to ensure that **high octane gas** is consistently used and our motors are protected from poor quality gas. Fill gas tanks in gravel area outside gas cage, not on docks, and replace in yellow container (job box) in cage after every use. Keep fuel line connector end clean (out of dirt) and be careful not to crimp fuel lines during use and storage.

3. **SAFETY NOTE:** when performing a rescue from water, shut motor **OFF** until person is safely in the boat. A Safety Ladder is attached to the transom for rescue from the water. The ladder is a 4-step telescoping ladder designed to allow for boarding at transom. During retrieval, the boat motor is to be turned off, operator to move to the bow of the boat to counter balance the weight.



Telescoping Safety Ladder at Transom



Swimmers Guard for propeller – motors #7 & #8 only.

SAFETY LIGHTS: The coach/safety boats are fitted with a red and green bow light and a 360-degree white light which is stored in a plastic tube in each boat.

4. **BOAT USAGE FEE:**

Teams who use the coach/safety boat regularly will be charged to help offset gas cost, repairs and replacement of coach boats and motors. Usage sessions are 1 ½ hrs each.

- Once a week usage = \$200 for a 6-month season
- Twice a week usage = \$400 for a 6-month season
- Three times a week usage = \$600 for a 6-month season
- Special Events: \$25.00 per day plus the cost of gas (GST included)

Please note: this does not guarantee or reserve boat usage, this is to offset cost.

Throughout the season, the coach/safety boat may be needed by other members or for events, so we ask all users to work together to share the club resources.

Boat usage fees are due by **April 15 (Apr-Sept) and October 15 (Oct-Mar) Seasons**

NON-MEMBER OPERATING COACH/SAFETY BOAT:

An experienced Non-Member boat operator with a valid Pleasure Craft Operator Card (PCOC) will need to purchase an Associate Membership of \$25.00 each year to operate the Coach/Safety Boat. An Associate membership can be purchased on the FLCC's website.

BOATS & MOTORS (Equipment Description)

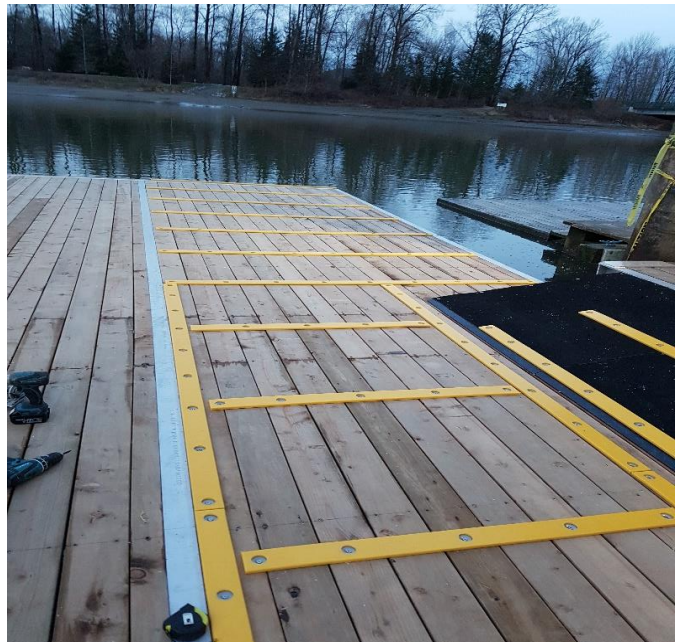
Coach/Safety-Boat #1		2018 Black Mirrocraft 15ft – 2 side seats, 2 bench seats
Coach/Safety-Boat #2		2019 Black Mirrocraft 15ft – 3 bench seats
Motor #7	Orange	Tohatsu 9.9 batteryless fuel injection motor & swimmers guard
Motor #8	Yellow	Tohatsu 9.9 batteryless fuel injection motor & swimmers guard
Motor #4	Red (spare)	Tohatsu 9.9 carbureted motor (Stored in basement cage)

LAUNCHING COACH/SAFETY BOAT FROM THE PADDLESPORT BOATHOUSE:

- Open west barn doors of Paddlesport boathouse and unlock boat.
- With assistance of at least one other person, slide boat on yellow strips, down ramp and onto the dock platform. Always grip the boat's gunnels when maneuvering the boat on the dock. **DO NOT** pull on the safety ladder as it may break.
- Make sure boat plug is in the coach/safety boat
- Slide boat, stern first, on yellow dock strips to the dock edge
- Slide boat into water stern first with one person holding bow line
- Tilt motor down into the water



West Barn Door & Ramp



Dock Platform & Yellow Strips

RETURNING COACH/SAFETY BOAT TO THE PADDLESPORT BOATHOUSE:

- Tilt motor to UP position
- Pull boat on to dock via yellow strips, bow first
- Bail boat
- Remove any personal items etc. and garbage from boat
- Slide boat along yellow strips and up ramp
- Return boat to boathouse making sure to leave space for the other coach/safety boat should it still be on water
- **Lock boat**
- **Return gas can to yellow container in gas cage**

INSTALLING FUEL – All Motors (#7, #8 & #4)

- Put gas container in boat
- Open vent on top of container
- Ensure fuel line is clean and attach to motor
- Pump primer ball until hard

TO START MOTOR – (#7, #8 & #4)

- Insure “dead man clip” is installed on “dead man kill button” and attach it to the boat operator.
- Set throttle on “Start.”
- **#4 Carbureted motor only** - Pull choke out fully, if starting for the first time, pull to start, and slowly push choke in as motor warms up. Re-starting motor does not require the choke.
- Pull cord to start.

ADDITIONAL INFORMATION:

- Never leave gas cans in the coach/safety boat or boathouse - always return to gas cage.
- Coach/safety boats are not to be used from sunset to sunrise unless approved by BOD.
- Never leave the coach/safety boat unlocked at the dock or in the boathouse.