



Coach & Safety Boats – Procedures & Rules

Members must [Book Coach & Safety Boats](#)

COACH/SAFETY BOAT RULES AND PROCEDURES

This info is sent out annually, as a reminder of rules and regulations for all of us who share the coach/safety boats. Please read thoroughly.

1. The following items must accompany you when operating the coach/safety boat:
 - Valid Pleasure Craft Operator's Card (PCOC)
 - Paddle (use Mohawk paddle - the one with aluminum shaft)
 - Noise making device - Pealess whistle attached to PFD recommended
 - Bailer
 - PFD
 - Throw bag
 - Orange Fox 40 Boat Essentials Kit (includes 3 reflective blankets, flash light, pencil, whistle & 50' nylon braided rope & float)
 - Cell phone and first aid kit in waterproof bag
 - List of potential ambulance pick-up points
 - Safety Lights – the safety/coach boats are fitted with a red and green bow light and a 360 degree white light which is in a plastic tube in each boat.
 - White light is to be used if on the water after sunset or before sunset. Special permission is required by BoD.
2. Gas tanks are topped up weekly by designated club volunteers and coordinated by the club Member at Large (MAL). The purpose of a “designate” is to ensure that **high octane gas** is consistently used and our motors are protected from poor quality gas. Fill tanks in gravel area outside gas cage, not on docks, and replace in yellow container in cage after every use. Keep fuel line connector end clean (out of dirt) and be careful not to crimp fuel lines during use and storage. All contact surfaces are to be sanitized when accessing the gas cage and yellow container. Sanitizing wipes and hand sanitizer are located in yellow container.

3. The Safety Boat Log Book is no longer required to be filled out as hour meters have been installed on all the motors. Any maintenance issues should still be noted and reported to the MAL.
4. **SAFETY NOTE:** when performing a rescue from water, shut motor **OFF** until person is safely in the boat. A Safety Ladder is attached to the transom for rescue from the water. The ladder is a 4 step telescoping ladder designed to allow for boarding at transom. During retrieval, the boat motor is to be turned off, operator to move to the bow of the boat to counter balance the weight.



Telescoping Safety Ladder at Transom

Swimmers Guard for propeller – motor #7 only

SAFETY LIGHTS: The safety/coach boats are fitted with a red and green bow light and a 360 degree white light which is stored in a plastic tube in each boat.

5. COSTS:

Teams who use the coach boat regularly will be charged to help offset gas cost, repairs and replacement of coach boats and motors. Usage sessions are 1 ½ hrs each.

- Once a week usage = \$200 for a 6 month season
- Twice a week usage = \$400 for a 6 month season
- Three times a week usage = \$600 for a 6 month season

Please note: this does not guarantee or reserve boat usage, this is to offset cost.

Throughout the season, the coach boat may be needed by other members or for events, so we ask all users to work together to share the club resources.

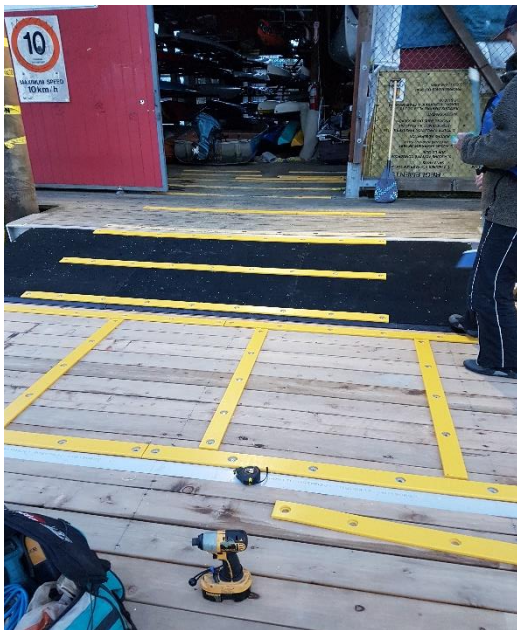
Boat usage fees are due by **April 15th**.

BOATS & MOTORS (Equipment Description)

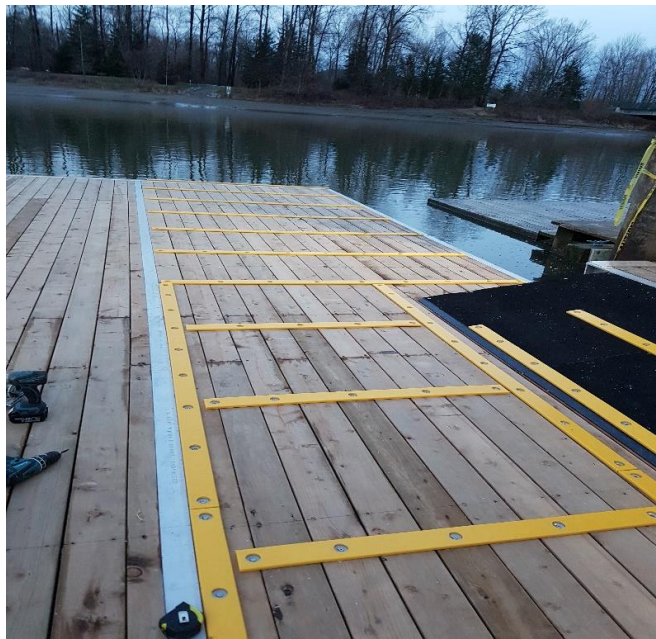
Safety/Coach Boat #1		2018 Black Mirrocraft 15ft – 2 side seats, 2 bench seats
Safety/Coach Boat #2		2019 Black Mirrocraft 15ft – 3 bench seats
Motor #7	Orange	Tohatsu 9.9 batteryless fuel injection motor & swimmers guard
Motor #8	Yellow	Tohatsu 9.9 batteryless fuel injection motor
Motor #4	Red (spare)	Tohatsu 9.9 carburated motor (Stored in basement cage)

Launching Coach/Safety boat from the Paddlesport Boathouse:

- Open west barn doors of Paddlesport boathouse and unlock boat.
- With assistance of at least one other person, slide boat on yellow strips, down ramp and onto the dock platform
- Make sure boat plug is in the coach/safety boat
- Slide boat, stern first, on yellow dock strips to the dock edge
- Slide boat into water stern first with one person holding bow line
- Tilt motor down into the water



West Barn Door & Ramp



Dock Platform & Yellow Strips

Returning Coach/Safety boat to Paddlesport Boathouse:

- Tilt motor to UP position
- Pull boat on to dock via yellow strips, bow first
- Bail boat
- Remove any personal items etc. and garbage from boat
- Sanitize boat and related equipment using alcohol-based sanitizer which is located inside the boathouse
- Slide boat along yellow strips and up ramp
- Return boat to boathouse making sure to leave space for the other coach/safety boat should it still be on water
- Lock boat
- Return gas can to gas cage

Installing Fuel – All Motors (#7, #8 & #4)

- Put gas container in boat
- Open vent on top of container
- Ensure fuel line is clean and attach to motor
- Pump primer ball until hard

To Start Motor – (#7, #8 & #4)

- Insure “dead man clip” is installed on “dead man kill button” and attach it to the boat operator.
- Set throttle on “Start.”
- **#4 Carbureted motor only** - Pull choke out fully, if starting for the first time, pull to start, and slowly push choke in as motor warms up. Re-starting motor does not require the choke.
- Pull cord to start.

ADDITIONAL INFORMATION:

- Never leave gas cans in the boat or boathouse - always return to gas cage.
- Coach/safety boats are not be used from sunset to sunrise unless approved by BoD.